

Pre-Engineered Batch Controller ready to install and commission



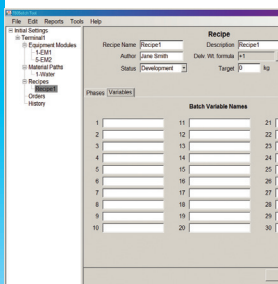
Pre-engineered

Provides 'out-of-the-box' functionality, pre-configured to suit many single-scale batching applications.



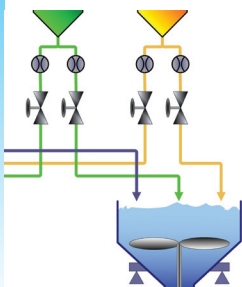
Dedicated control

With its stand-alone operation, Packaged IND780batch can manage ten automatic materials with 2-speed feed control, as well as all of your manual materials or hand-adds.



PC configuration

Batch PC-based batch configuration tool allows easy master recipe creation and download to one or more terminals. 1000 master recipes can be stored, with up to 999 material paths and 99 steps per recipe, for maximum flexibility of configuration. Configurations can be duplicated, and backed up for safe-keeping.



Simplify your batch process

Packaged IND780batch takes the guesswork out of your batch system design by providing a pre-configured solution. It allows you to take advantage of the powerful features offered by the IND780batch product.



Packaged IND780batch Controller with Batch-780 application software

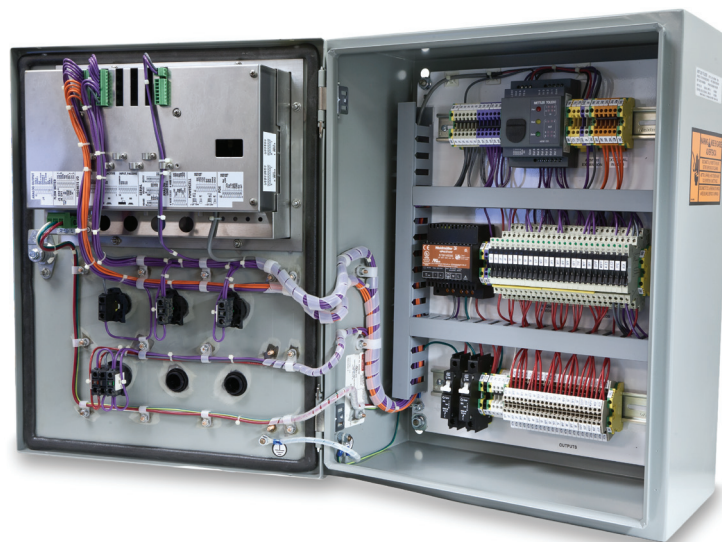
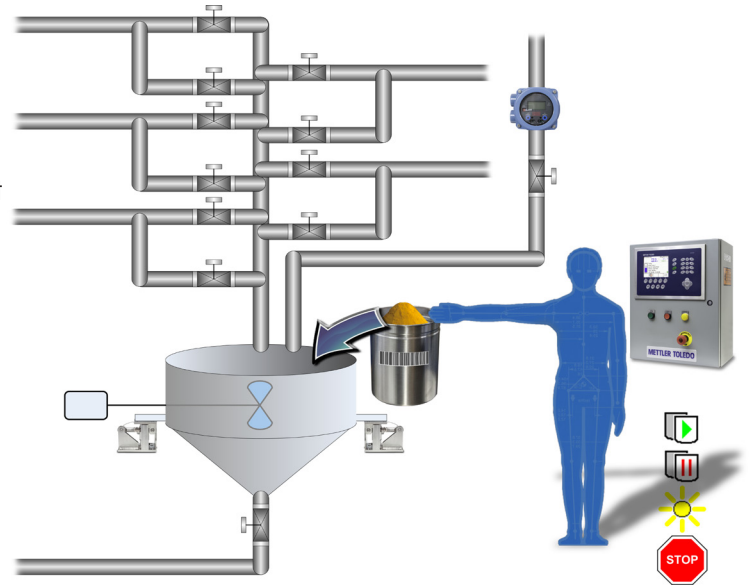
Packaged IND780batch provides advanced batch control technology in a pre-configured design to allow out-of-the-box performance and easy installation. This controller is the replacement option for legacy LynxBatch and 9215 Batch systems. Configured for a single scale application and with capability to handle ten automatic materials, one dump to empty and an auxiliary control output, plus the ability to perform vertical and horizontal batching, Packaged IND780batch can handle a wide array of applications. With the included PC configuration tool, you can configure recipes, manage orders and obtain history data from your process. Enhance your batch process with flexible, accurate, and reliable performance from the leader in weighing technology, METTLER TOLEDO.

Pre-engineered batching solution

from the leader in industrial process weighing and control

Features and Benefits

- Pre-engineered, self-contained, stand-alone controller for batch applications
- Logic for 10 automatic materials (2-speed), 1 dump to empty, and 1 auxiliary control
- Start/Resume and Pause/Abort pushbuttons, attention light and Emergency Stop switch
- Available Q.iMPACT® Predictive Adaptive Control (PAC) to minimize material feed variability and maximize production efficiency
- Storage for up to 1,000 recipes, containing 99 steps per recipe
- PC configuration tool for recipe and order creation, track and trace logging, security setup, and usage report
- Ability to adjust order batch size by %, target value, or ingredient amount with recipe looping capability
- Automatic material jogging eliminates under-tolerance materials by adding small additional material amounts until within target tolerance
- Gain-in-weight, loss-in-weight, hand add, and discharge cover all material feed types
- Dump-to-empty management to control removal of all material in a vessel in the shortest amount of time
- Print capability for end-of-batch summary and custom print messages
- Ability to Park, Pause and Abort a batch
- Power loss recovery resumes process where it was interrupted
- Execute a custom TaskExpert program as part of a recipe phase, to perform processes outside the scope of the standard batching software, before returning to complete the recipe
- Execute a custom TaskExpert program as part of a recipe phase, to perform processes outside the scope of the standard batching software, before returning to complete the recipe



Technical Specifications

Model number	C78BAT100010M00
Scales	Single-scale applications
Scale types	Analog scale: Powers up to 8 350Ω load cells, 2 or 3 mV/V, per channel. Interfaces with tank/hopper scales, floor, bench and truck scales, as well as high-resolution weigh modules.
Master recipe	Up to 1,000 recipes can be stored in the terminal, with each recipe containing up to 99 steps
Batch size adjustment	Allows batch size adjustment per order by %, target value, or ingredient amount
Configuration and setup	BatchTool 780 PC-based configuration tool provides the interface to manage equipment, materials, recipes, orders, and reports
Material management	Up to 999 material paths are supported
Enclosure	508 x 406 x 203 mm (20 x 16 x 8 in.), painted steel enclosure, certified Type 4/12
Terminal keypad	0-9 numeric keys, decimal point, clear, tare, zero, print, select scale, four application-specific softkeys, five scale function keys, screen navigation keys, enter key
Terminal display	TFT color graphical LCD display with backlight
Power requirements	Terminal – 100 - 240 VAC, 49 to 61 Hz, 400 mA max. Control – 115 VAC, 6 A max.
Reporting	Includes: Master recipe listing, batch control recipe history, order summary, material usage, and audit trail reports
Security	Login access security levels to prevent unauthorized changes to orders and control recipes
Barcode Interface	Supports operator scanning of each material, via serial or USB connection
Standard Connectivity	(1) RS-232, (1) RS-232/422/485; Ethernet 10/100 Base-T; USB Master (external keyboard)
Track & Trace	Logs Batch ID, date, time, user ID, changes during the batch, success/fail status of batch; stored data can be exported as .csv
Digital I/O	Configured with: 2 discrete (relay) I/O cards, 8 inputs - 5-30VDC, 8 outputs - 30VDC/30VAC, 1A max. 1 ARM100 module: 4-inputs - 5-30VDC, 6 outputs - 30VDC/250VAC, 1A max.

Accessories and Options

Additional Discrete I/O	Supplementary ARM100 modules
Flow Meter Interface	Add a flow meter interface card to accept input from a flow meter as part of the batch process
Q.iMPACT Predictive Adaptive Control	Add Q.iMPACT Material Transfer PAC to provide unmatched production capability and accuracy to your material transfer process



Mettler-Toledo, LLC
 1900 Polaris Parkway
 Columbus, OH, U.S.A.
 Phone +614 841 7300
 +800 786 0038
 Fax +614 841 0038

Subject to technical changes
 © 06/2012 Mettler-Toledo, LLC
 INDB0080.2E

www.mt.com/IND780batch

For more information